

# WHY ?? HIGH-YIELDING ANIMALS ARE NOT GIVING EXPECTED MILK?

1. Protein & Fat get destroyed.



2. 60-70% protein is wasted by rumen microbes

3. Normal fat also reduces fiber digestion.

## THIS LEADS TO:



Poor milk synthesis and output



Poor fertility



Hormonal imbalance



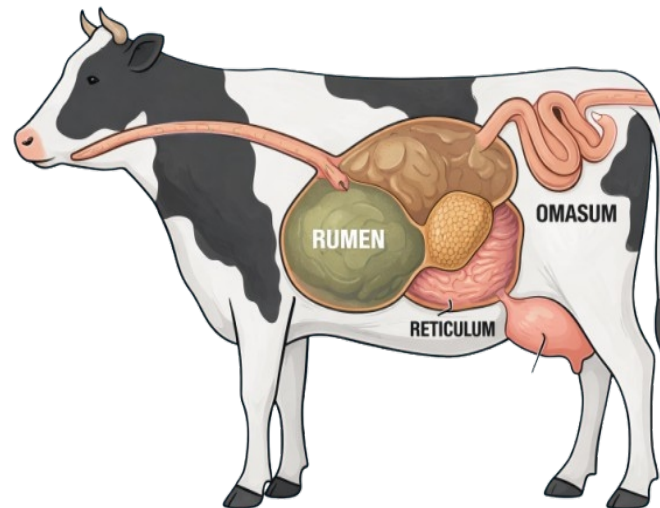
Low fat%

# SOLUTION SWAI PROTEIN

Delivering Protein & Energy where it is really needed.



<b>Composition (Each 100 ml contains):</b>	
Rumen Protected Protein	2500 mg
Rumen Protected Fat	2500 mg
Propylene Glycol	2000 mg
Phosphorous	1300 mg
Calcium	2600 mg
Niacinamide	180 mg
Carbohydrates	40000 mg



Swai protein providers  
1. **Rumen Bypass Fat & Rumen Bypass Protein.**

2. Escape rumen destruction

3. Reach intestine directly

4. Get absorbed 100%

5. Bypass Protein

↓  
Provides direct amino acids

6. More milk & higher SNF

7. Bypass Fat → Provides high-density energy → higher fat %,

8. Better body condition

9. Propylene Glycol → Prevents ketosis → supports glucose supply

10. Calcium & Phosphorus → Improves milk let-down & fertility.

**Usage (Adjusted Dosage):**  
Cow/Bufalo: 100 ml once a day  
Calves: 15-25 ml daily  
Sheep & Goat: 10-15 ml daily

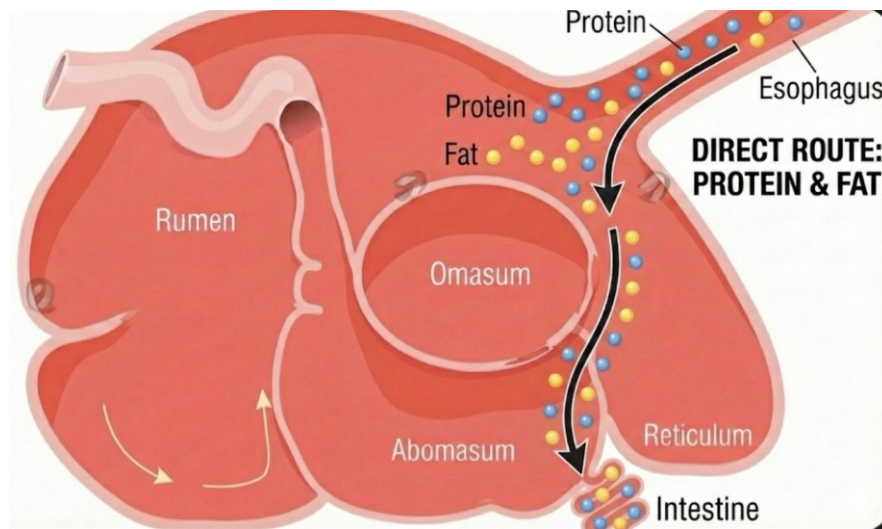
## BENEFITS

- ✓ 10-20% more milk
- ✓ Increase in milk fat & SNF
- ✓ Faster heat & better conception
- ✓ Strong animals
- ✓ Higher farmer profits

**NO RUMEN LOSS, DIRECT BODY ABSORBED**

Technically proven Action

# SWAI PROTEIN



Direct absorption of Protein and Fat in intestine

**Results :** loss to profit



**Presentation :** 1 Litre & 5 Litre

## Your Profit, Our Promise